

Actipass Co., Ltd.

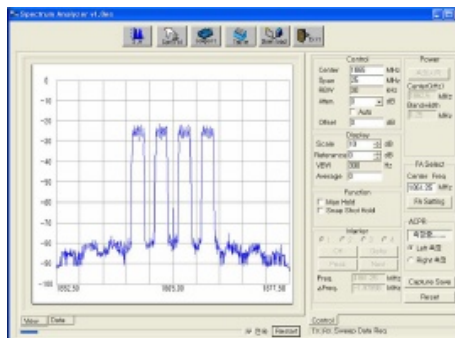
451, Hagal-Dong, Giheung-Gu, Yongin-Si, Kyunggi-Do, Korea

TEL : 82-31-201-7589 FAX : 82-31-204-7502

E-Mail : steve@actipass.com / actipass@actipass.com www.actipass.com



SAMPCS-M



Description

- MONITORING SPECTRUM OF KOREA PCS FULL BAND
- GRAPHIC USER INTERFACE (PC SCREEN)
- PORTABLE
- SMALL SIZE AND WEIGHT
- BEST PRICE VERSUS PERFORMANCE
- LOW POWER CONSUMPTION
- APPLICATION FOR MOBILE REPEATER AND BASE STATION MANAGEMENT

Function

- Center Frequency
- Span
- RBW
- VBW
- Manual Attenuator
- Auto Attenuator
- Input Power Offset
- Scale
- Reference Level
- Average Count
- maxhold
- Snap Shot Hold
- Marker Function
- Channel Power
- ACPR
- Capture Save
- Over Power Alarm

Specifications

Parameter	Specifications
Frequency [MHz]	1740 ~ 1880 (140MHz)
Input Power [dBm]	-70 ~ +10
Dynamic Range [dB]	80
Resolution Bandwidth [KHz]	30
Video Bandwidth [Hz]	300
Amplitude Accuracy [dB]	± 1.0 @ 10dB Scale

Actipass Co., Ltd.

451, Hagal-Dong, Giheung-Gu, Yongin-Si, Kyunggi-Do, Korea

TEL : 82-31-201-7589 FAX : 82-31-204-7502

E-Mail : steve@actipass.com / actipass@actipass.com www.actipass.com

Input Impedance [Ω]	50
Scale [dB]	10/5/2/1
Sweep Time [sec]	5.8 (140MHz)
Reference Level [dBm]	+20 ~ -50
Display Unit	dBm
Display	GUI
Connector	SMA Female (RF Input)
	D-SUB 9pin (RS-232)
	DC Pin Jack
Dimension (W x L x H) [mm]	117 x 92 x 26
Weight [g]	TBD
DC Input Voltage [V]	min. +8 ~ max. +17
DC Current [mA]	9V / 600mA

* The specification can be modified upon buyer's requests.

* All specifications are subject to change without notice.

* The latest specifications are available at www.actipass.com
